

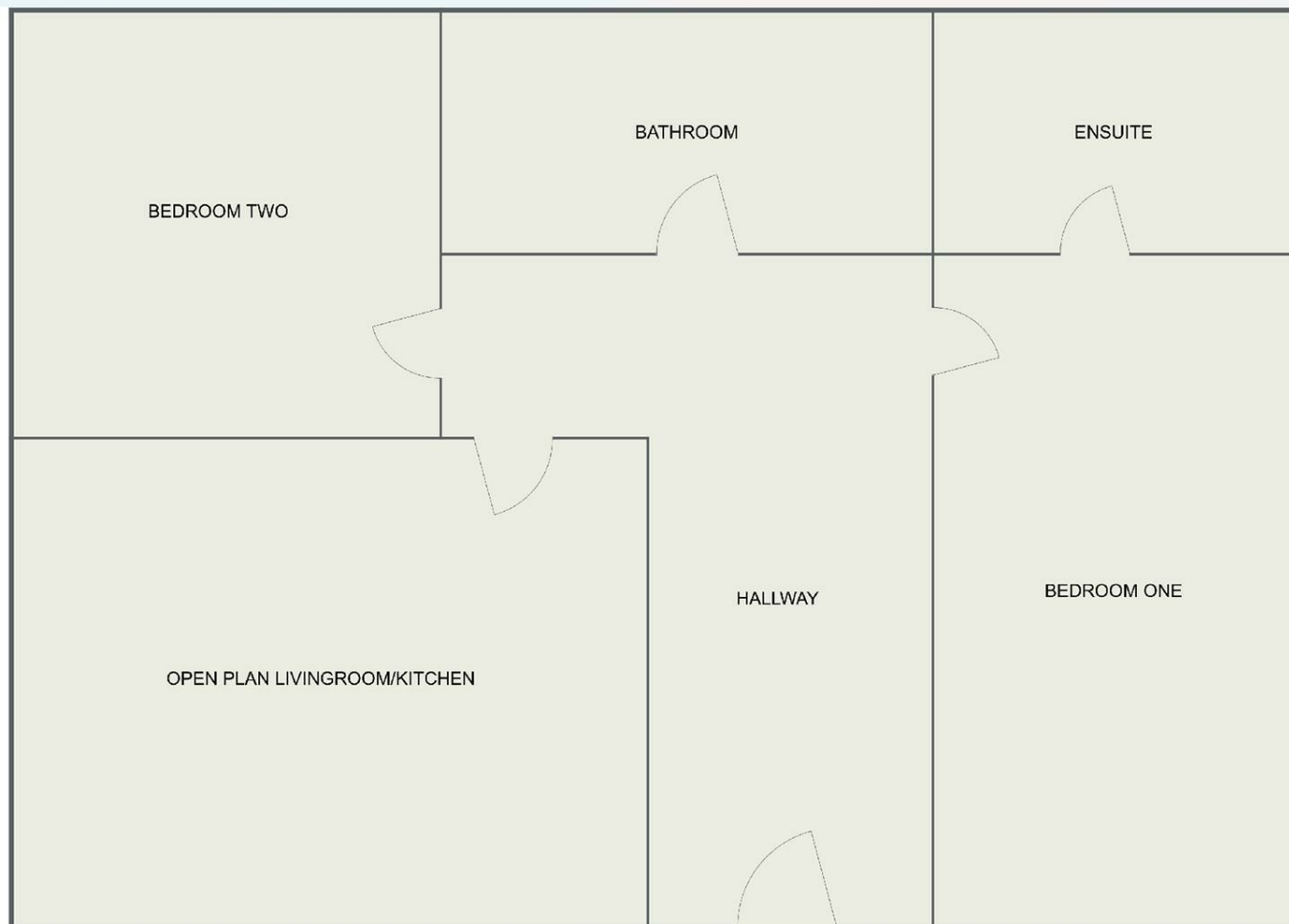


## Worcester Street £240,000 Leasehold Birmingham

- Two generous double bedrooms, including a stylish master suite with private ensuite (3.2m x 4m; ensuite 2.2m x 1.2m)
- Open-plan living and kitchen area (3m x 7.3m) – bright and airy with ample space for dining and relaxation
- Modern main bathroom (3.4m x 2.2m) – featuring quality fittings and elegant tiling
- Allocated secure car parking space included in the sale – a rare and valuable city-centre feature
- Asking Price £240,000 (Leasehold)
- Spacious second bedroom (5.5m x 2.7m) – perfect for guests, sharers, or a home office
- Contemporary fitted kitchen with integrated appliances, sleek cabinetry, and generous workspace
- Separate utility room (2.2m x 1.2m) – ideal for laundry and additional storage
- Ground Rent: £5,510 per annum
- Lift access to all floors and secure entry system for resident safety



Local Authority **Birmingham**  
Council Tax Band **E**  
EPC Rating **F**



**Pam Estates Ltd Office**  
187 Rookery Road, Handsworth,  
Birmingham, West Midlands, B21 9QZ

**Contact**  
01215549990  
info@pamestates.co.uk  
<https://www.pamestates.co.uk/>

Agents Note: Whilst every care has been taken to prepare these particulars, they are for guidance purposes only. All measurements are approximate and for general guidance purposes only and whilst every care has been taken to ensure accuracy, they should not be relied upon and potential buyers/tenants are advised to recheck the measurements.